

MODUS™ 770 AND MODUS™ 1280

BALLAST ASSEMBLY INSTRUCTION LEAFLET

NOTE: Ensure that all relevant personnel read the points listed below and that a copy is passed on to staff involved with the installation. Please also refer to the 'Manual Handling Operations Regulations 1992' during the handling of the product and materials used for installation.

The total weight of this product is:-

| | |
|----------------------------|-------|
| Modus 770 without Ballast | 102kg |
| Modus 770 with Ballast | 254kg |
| Modus 1280 without Ballast | 119kg |
| Modus 1280 with Ballast | 314kg |

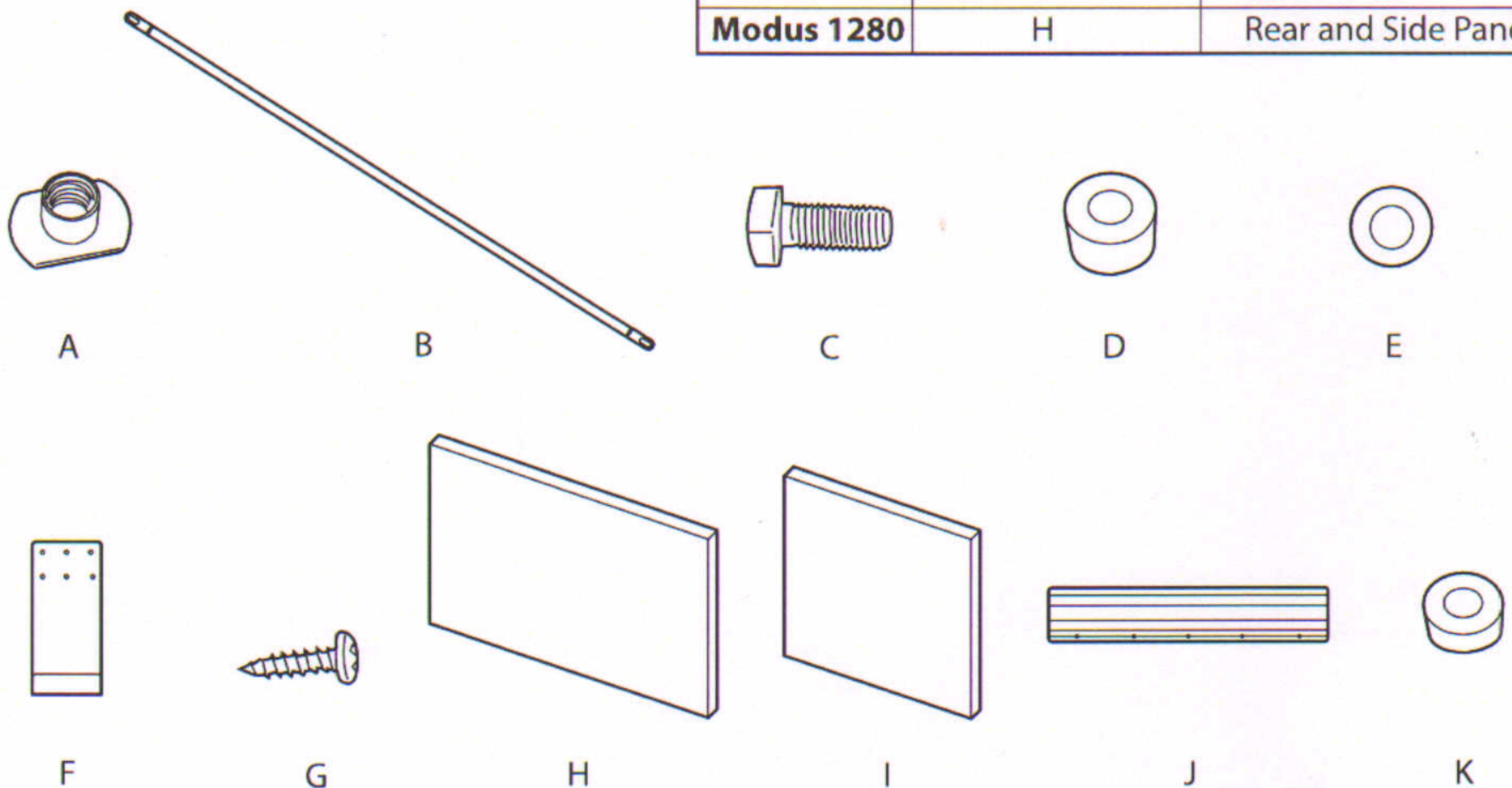
KIT CONTENTS:

| | | 770 | 1280 |
|--|---------------------------------|------------|-------------|
| ITEM A | M10 Tee Nut | x2 | x2 |
| ITEM B | Ballast Strap | x1 | x1 |
| ITEM C | M10 x 25mm Bolt | x2 | x2 |
| ITEM D | Nylon Spacer 10.2 x 20 x 12mm | x2 | x2 |
| ITEM E | M10 S/S Washer | x2 | x2 |
| (Items A - E only included if the housing is being built from flat pack) | | | |
| ITEM F | Bottom Bracket (Mild Steel) | x6 | x6 |
| ITEM G | 5mm x 20mm Chipboard Screw | x51 | x51 |
| ITEM H | 600x900x50mm Paving Slab | x1 | x3 |
| ITEM I | 600x600x50mm Paving Slab | x2 | |
| ITEM J | Top Bracket (Aluminium) | x3 | x3 |
| ITEM K | Nylon Spacer 8.6 x 19.7 x 8.1mm | x15 | x15 |

TOOLS REQUIRED:

| | |
|--------------------------------|----|
| Hand Drill with Pozi Drill Bit | x1 |
| 17mm Spanner | x1 |

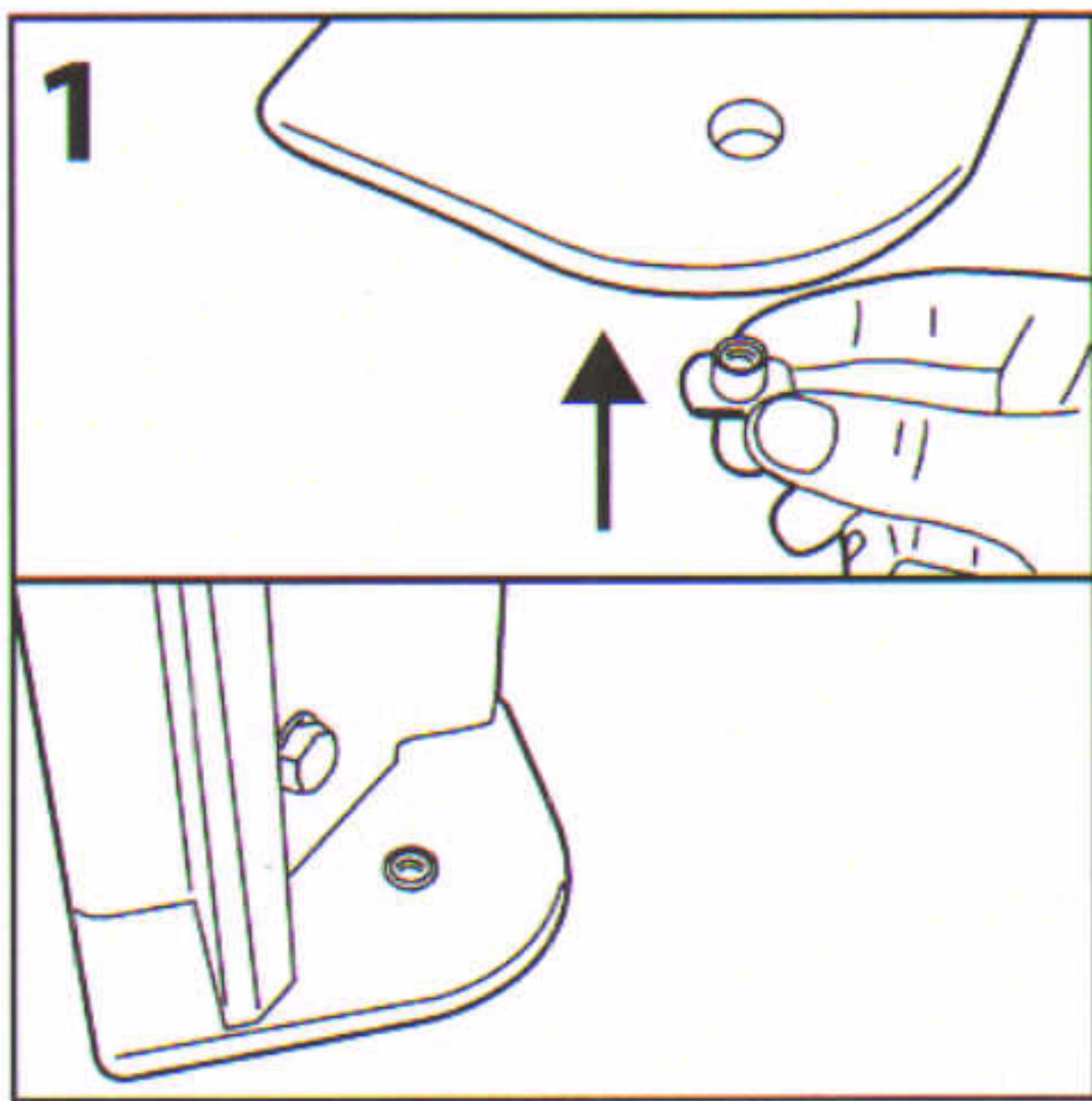
| | Paving Slab Size | Housing Location |
|-------------------|------------------|----------------------|
| Modus 770 | H | Rear Panel |
| | I | Side Panels |
| Modus 1280 | H | Rear and Side Panels |



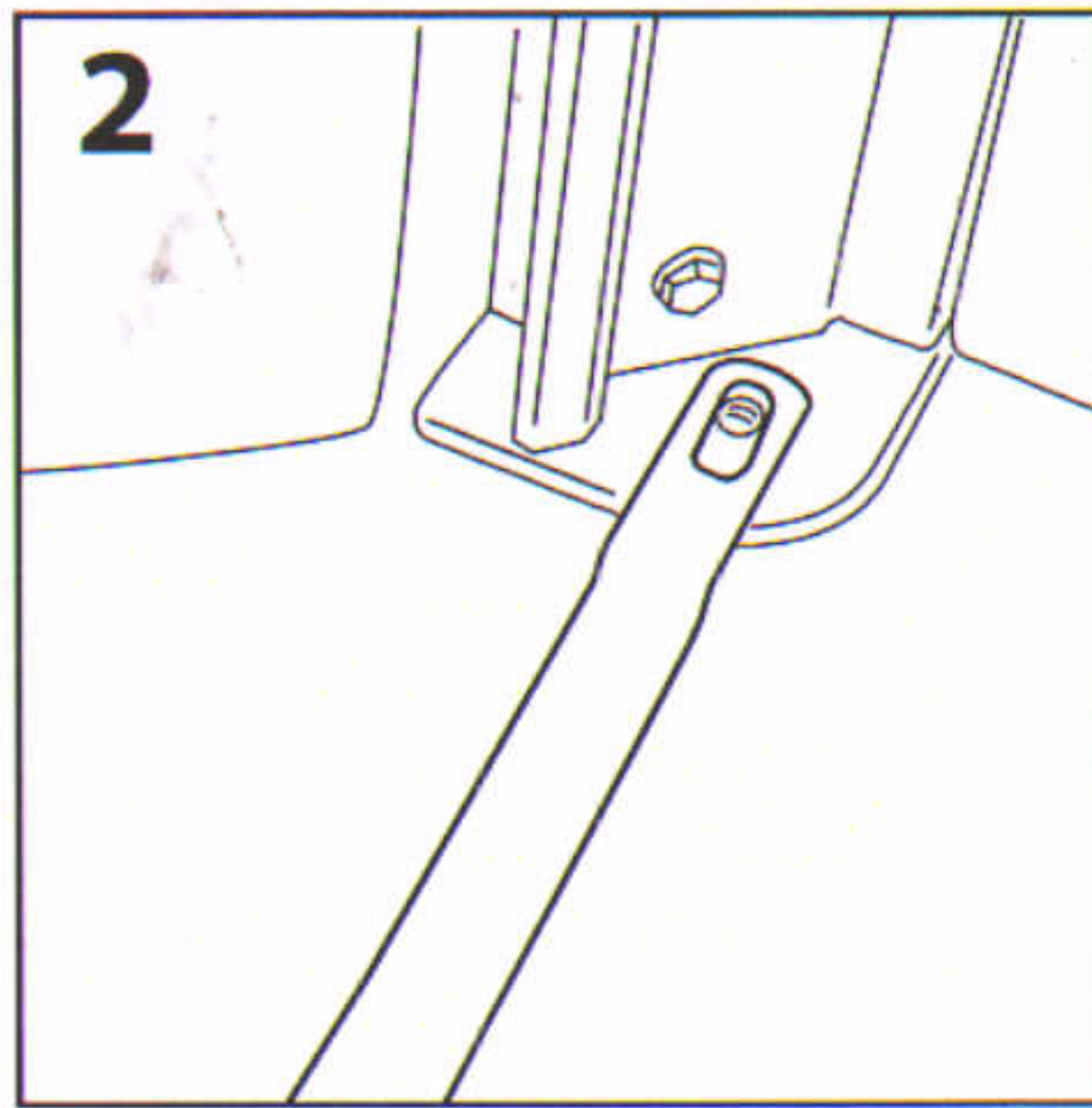
NOTE: To allow the wheeled bin to sit inside the housing in the correct position, it is recommended that the lid of the wheeled bin remains attached and is simply folded over the back of the bin when in use. If the space is too tight, the lid of the wheeled bin can be removed but the operator must ensure that the front of the wheeled bin is level with the front two extrusions for best results.

NOTE: The ballast MUST only be assembled once the housing is in the desired location and all adjustments have been made e.g. adjustment to spigot legs, door wheel and hood.

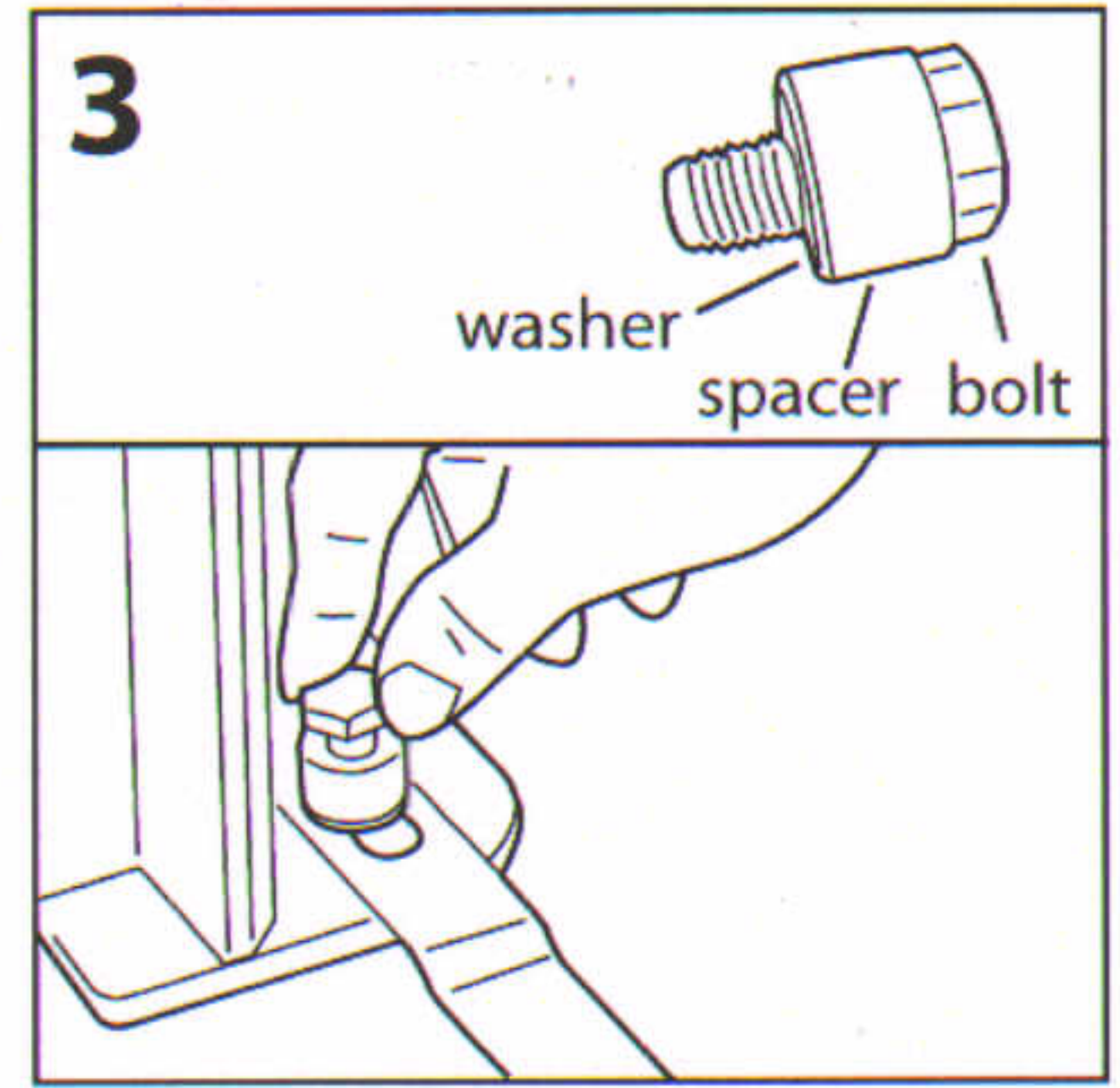
STEP 1: ASSEMBLY OF BALLAST STRAP (If already assembled move on to Step 2):



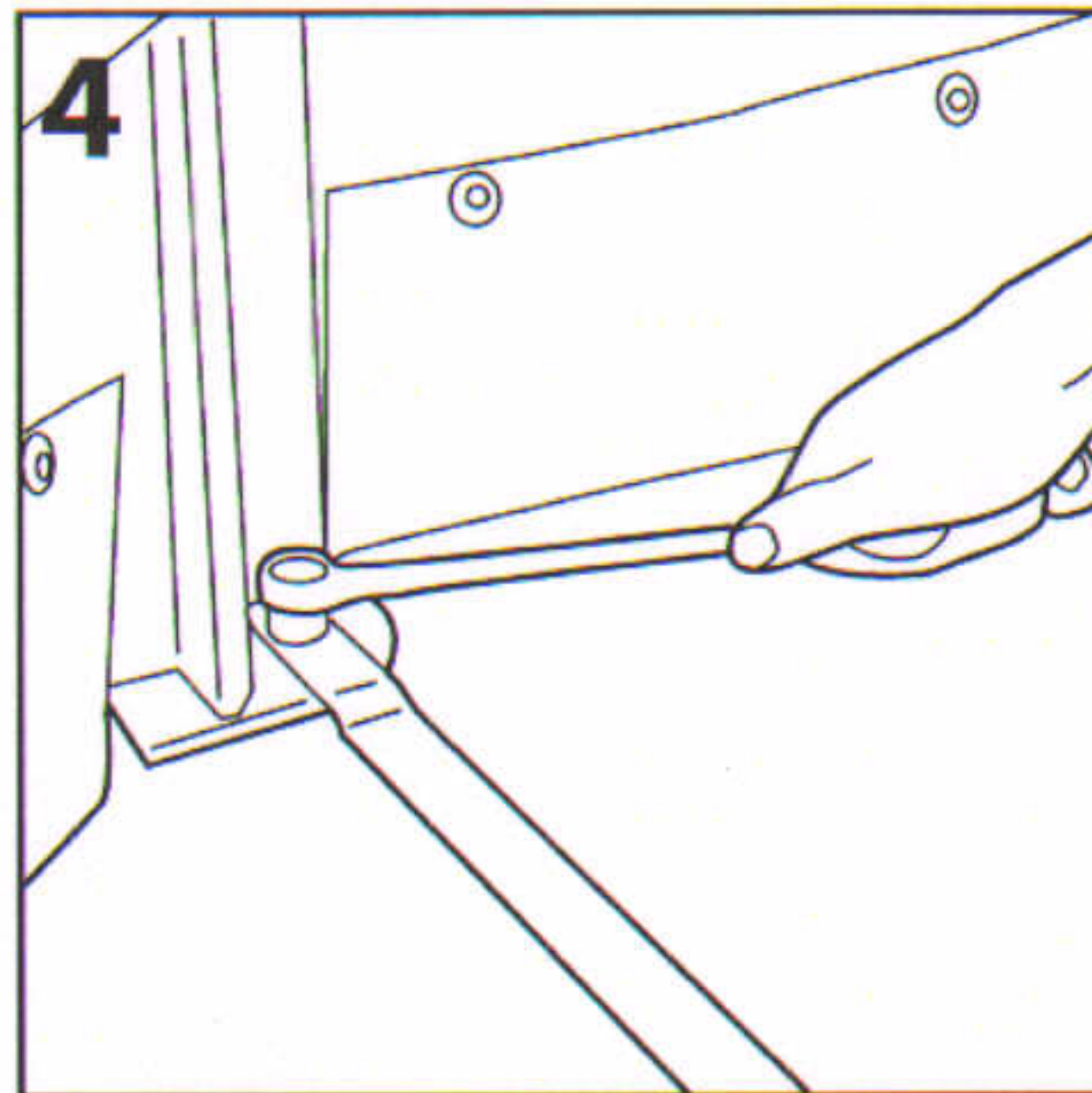
Lift up both of the front extrusions by tilting the housing backwards. Place a Tee nut (A) into the hole within each spigot plate from underneath so that the thread appears within the hole. (Will require 2 or more people).



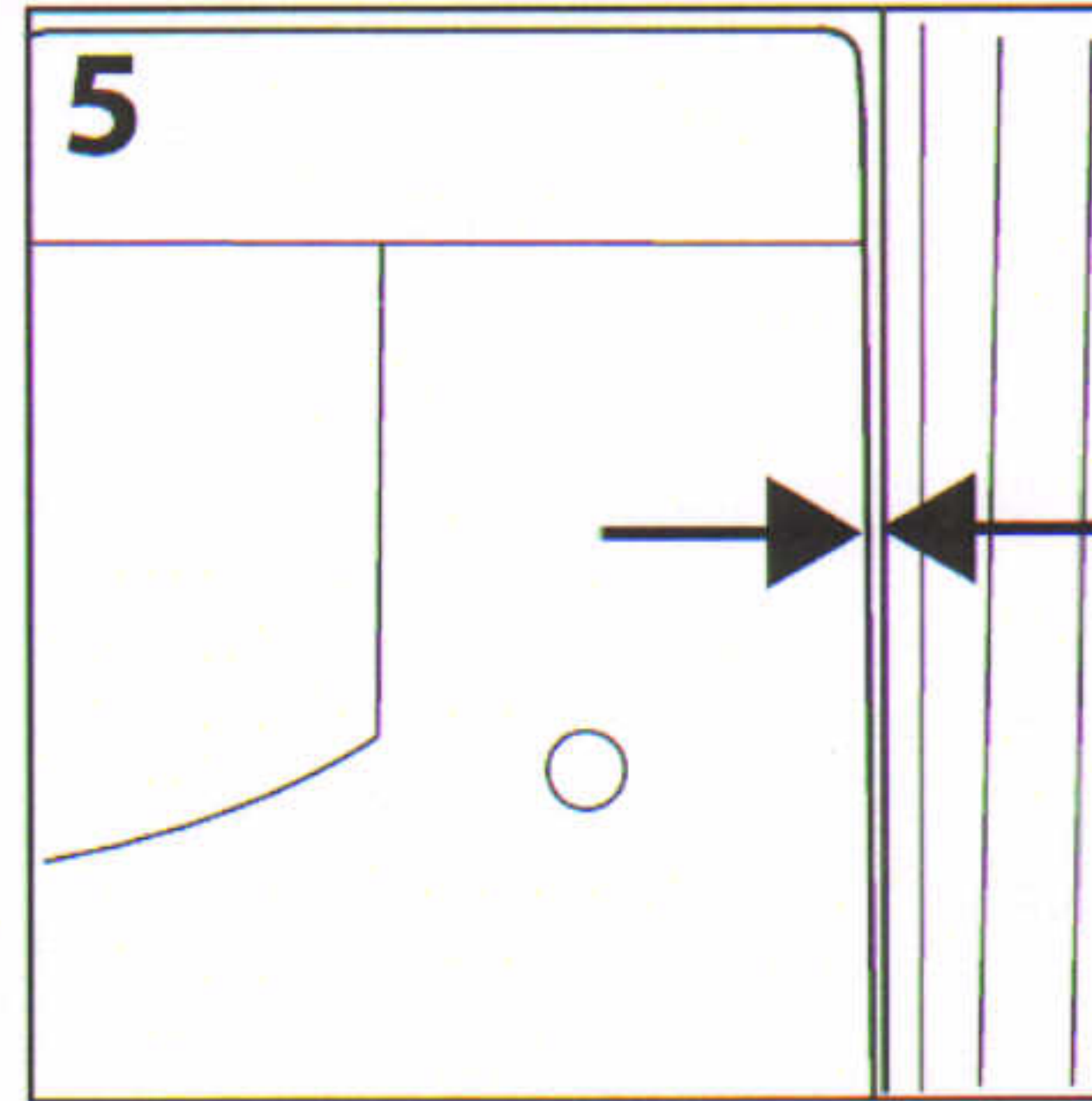
Place the ballast strap (B) between the front two extrusions so that the hole in each end is positioned over the Tee nut. Ensure that the ballast strap is resting on the ground.



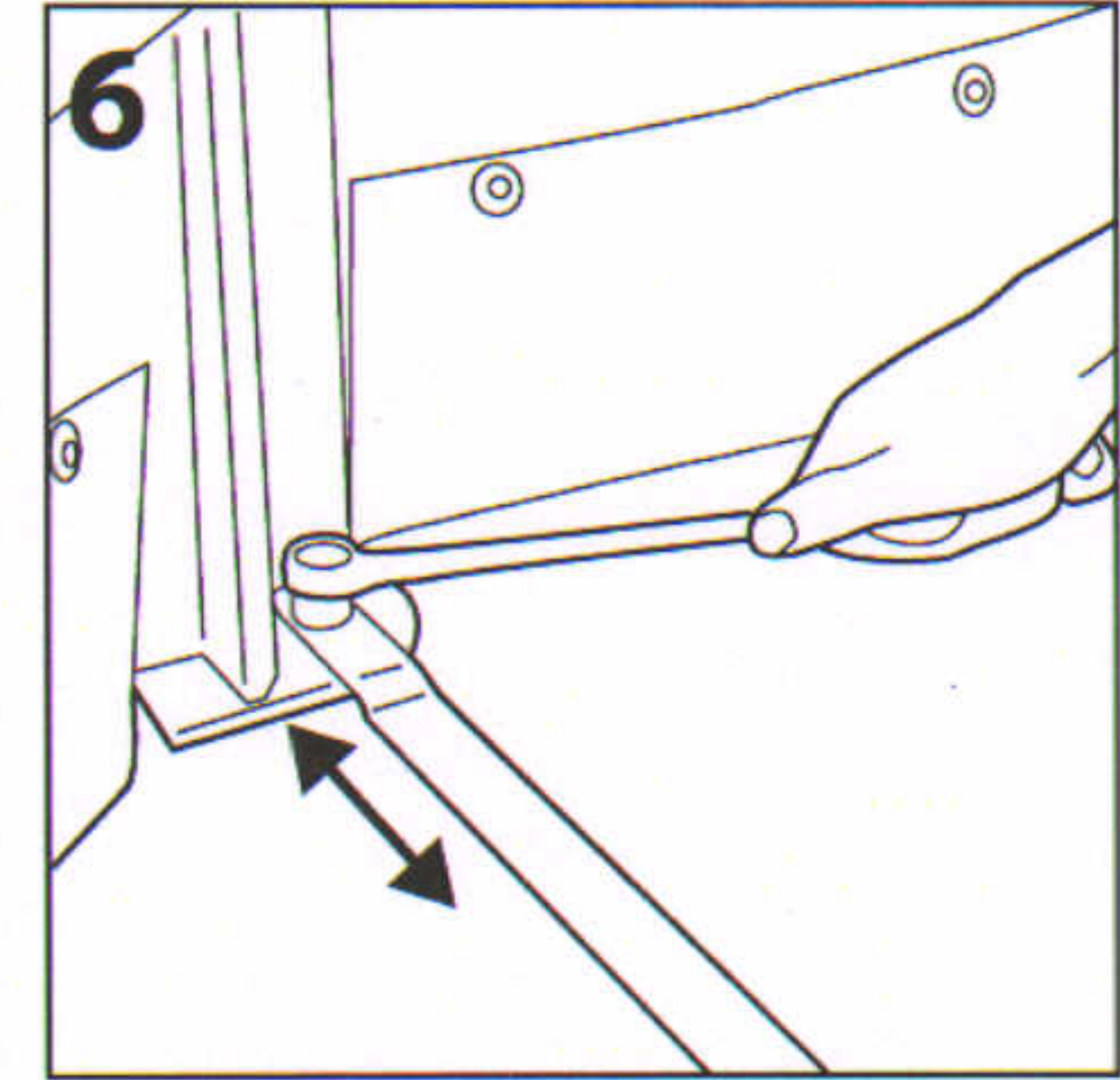
Using an M10mm bolt (C), 12mm spacer (D) and an M10mm washer (E) fix the ballast strap by hand at both ends using the fixings.



Using a 17mm spanner, secure the ballast strap in position at both ends.

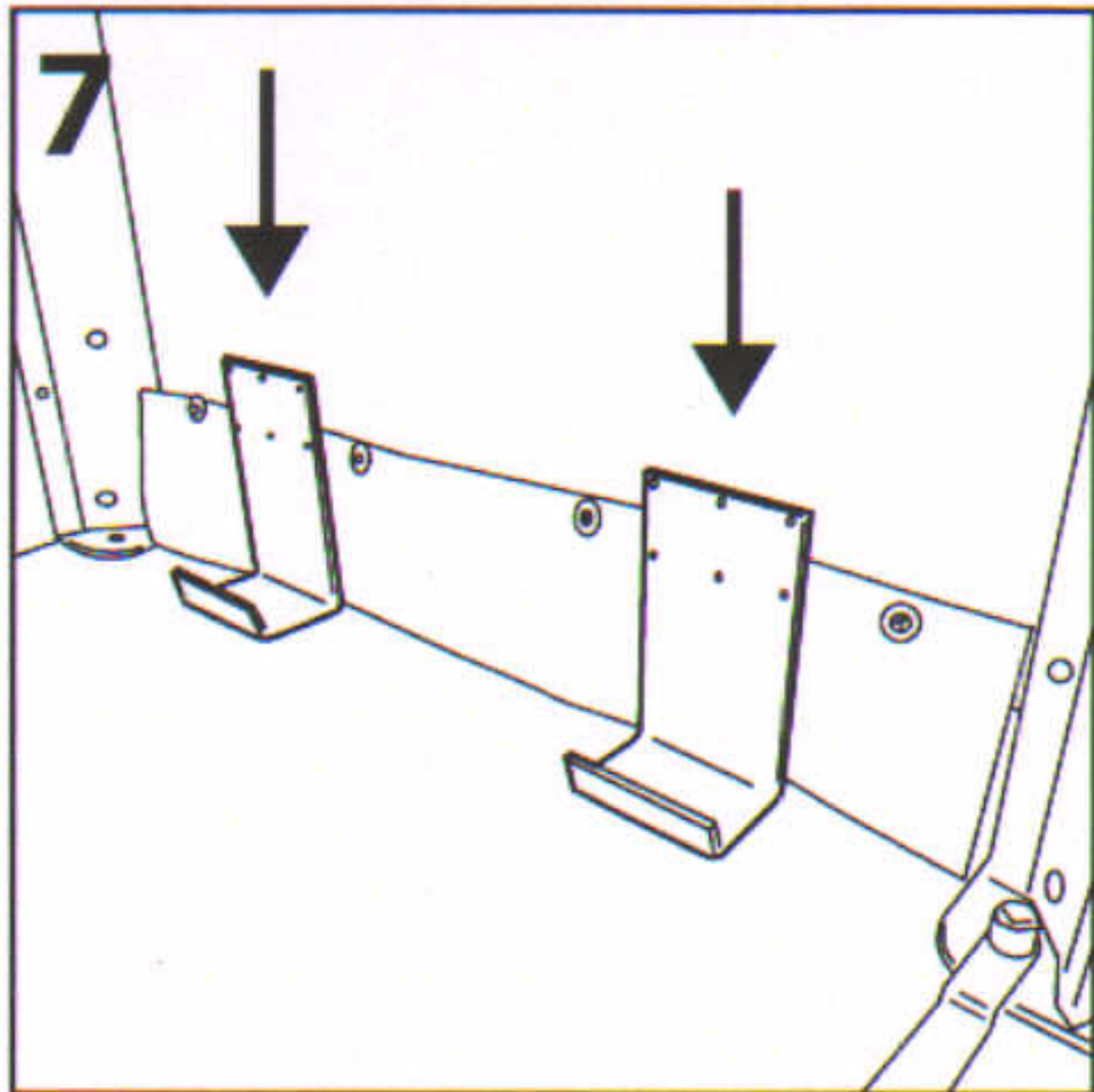


Close the door and ensure that there is an even gap running between the door and the receiving extrusion.

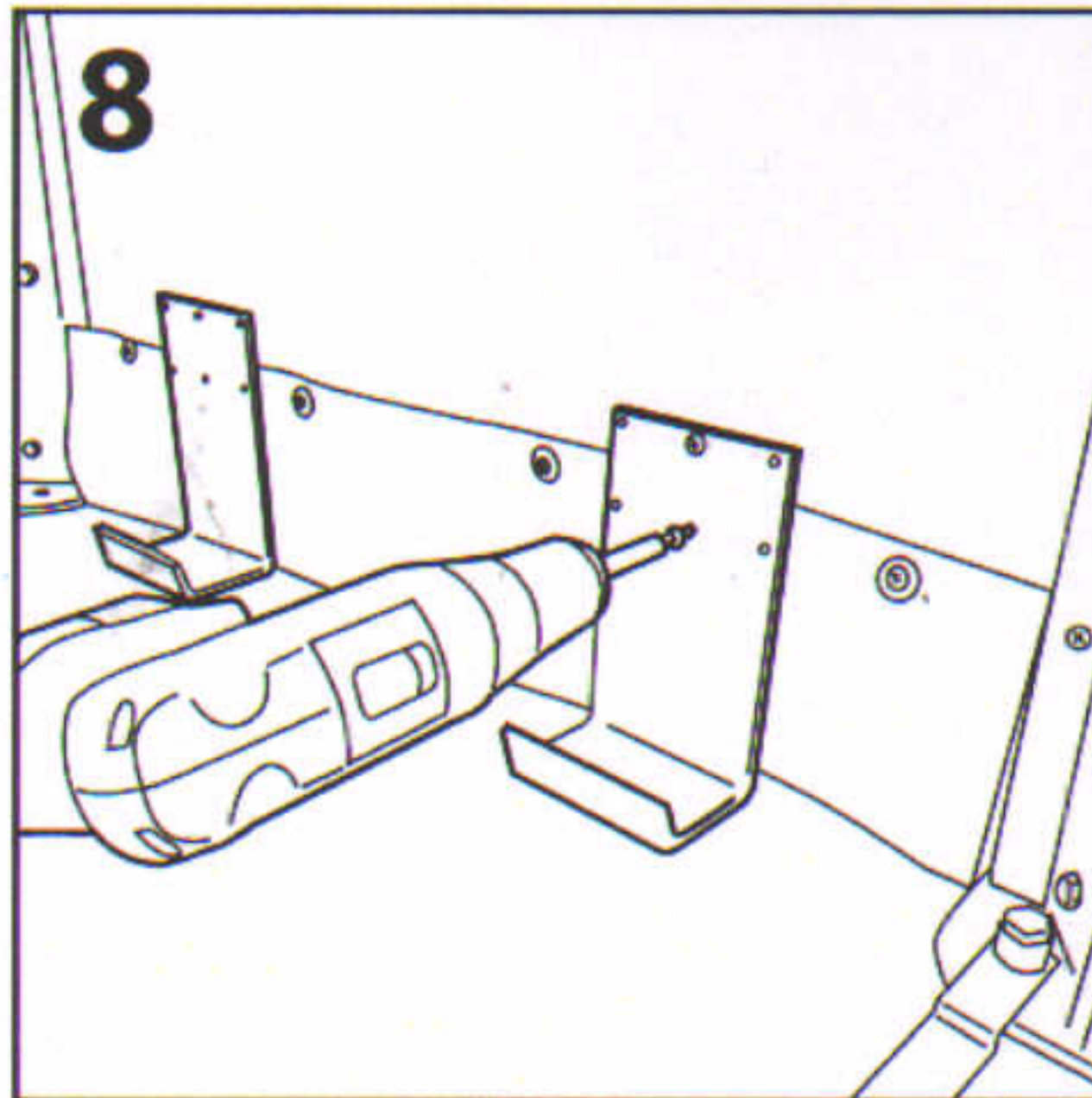


If the gap is uneven, unscrew the ballast strap fixings and adjust the position of the door receiver extrusion. When the gap is even secure the ballast strap fixings in place as per Fig 4.

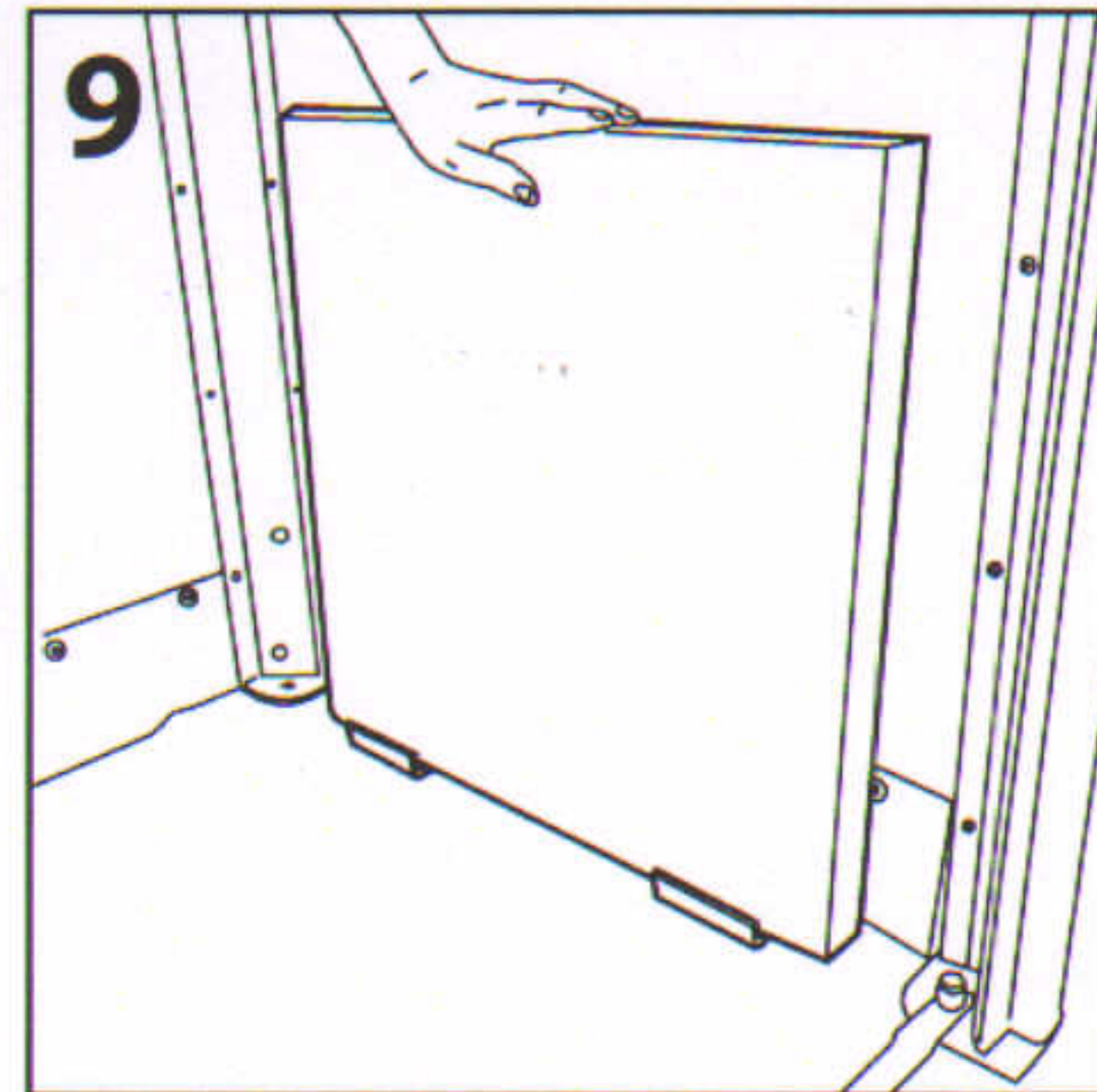
STEP 2: ASSEMBLY OF BALLAST:



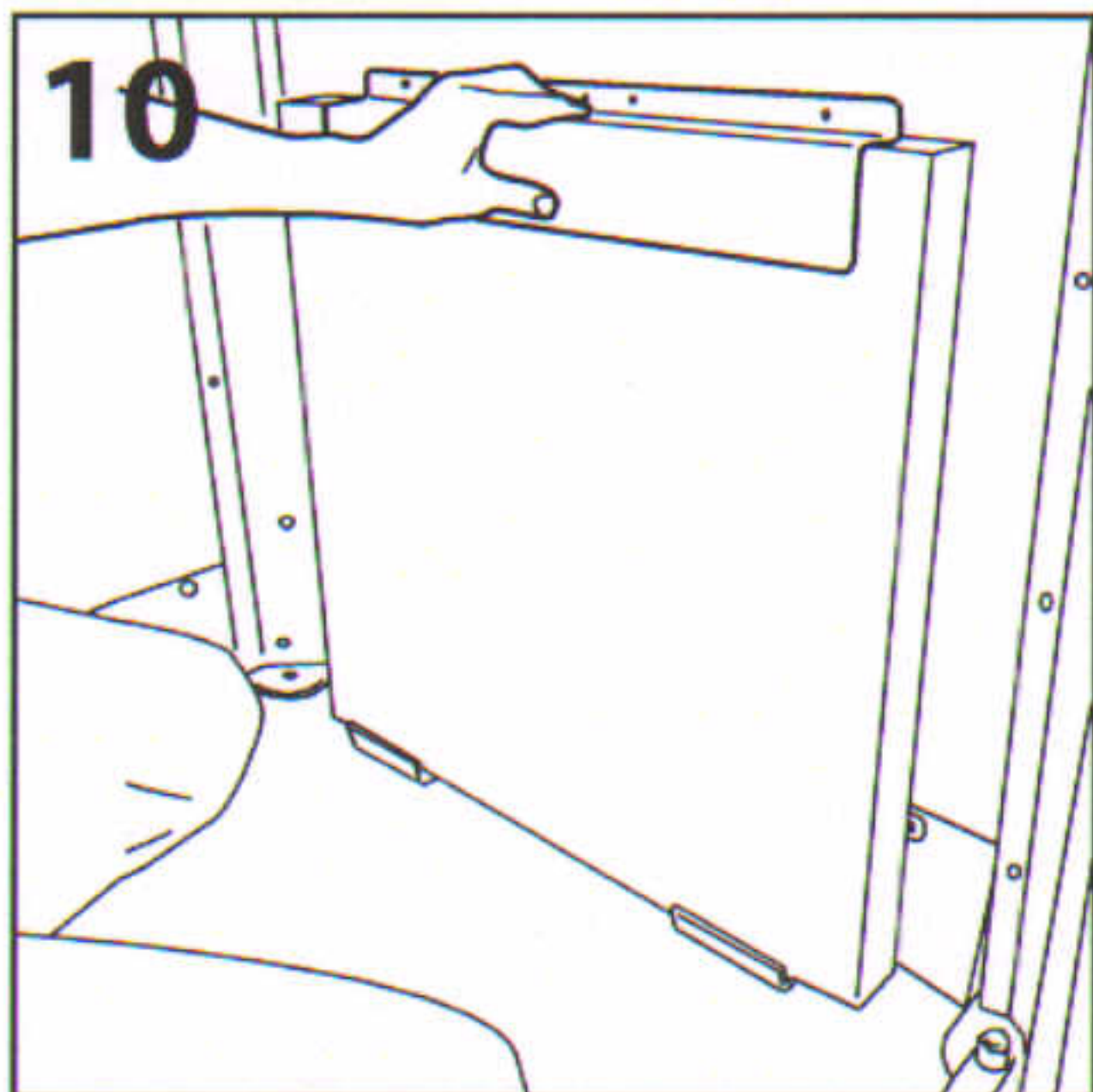
Open the door. Place 2 off bottom brackets (F) in between the fixings on the base skirting so that they are resting on the ground.



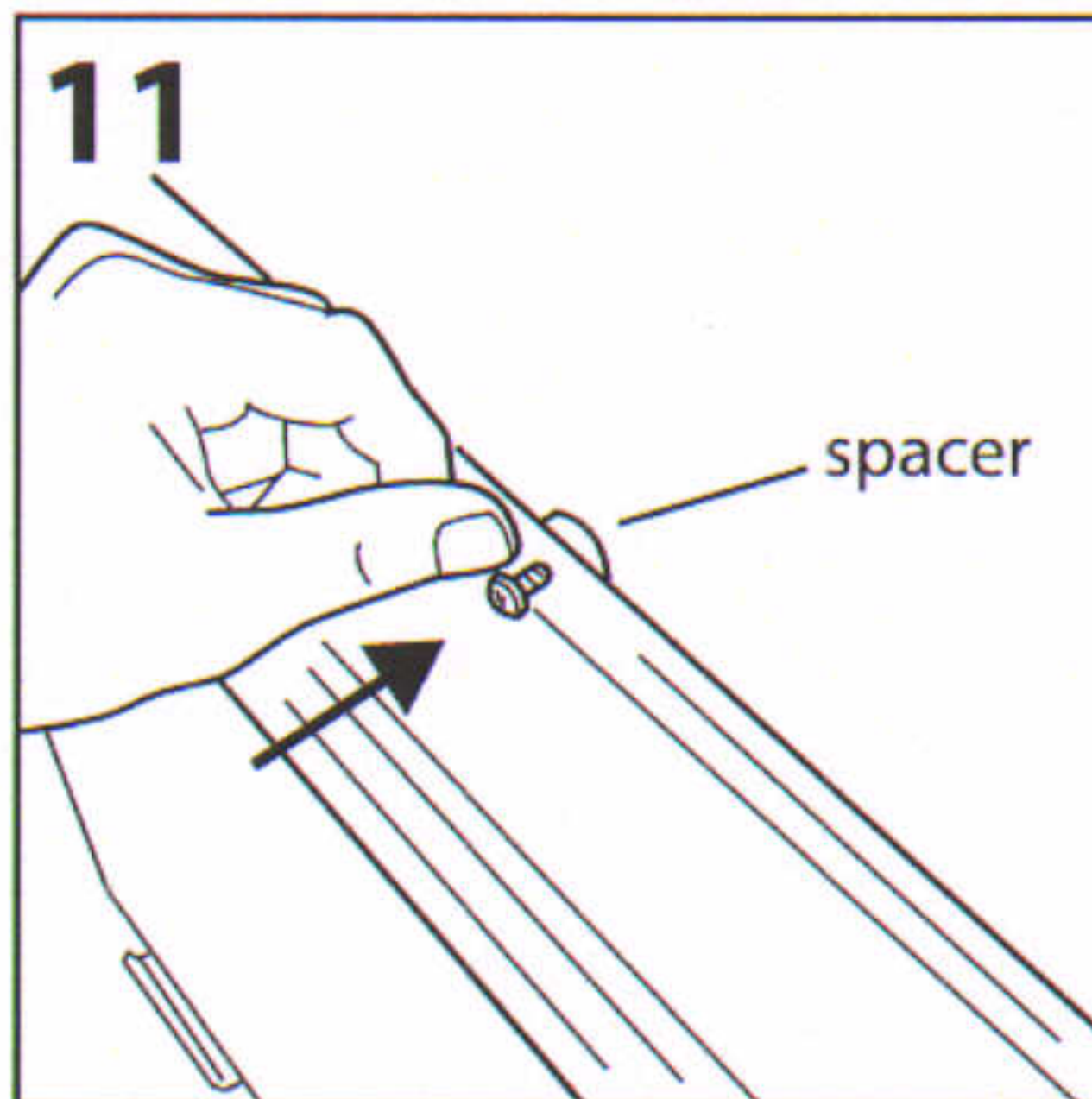
Using 12 off screws (G), fix through the pre-drilled holes in the brackets into the board.



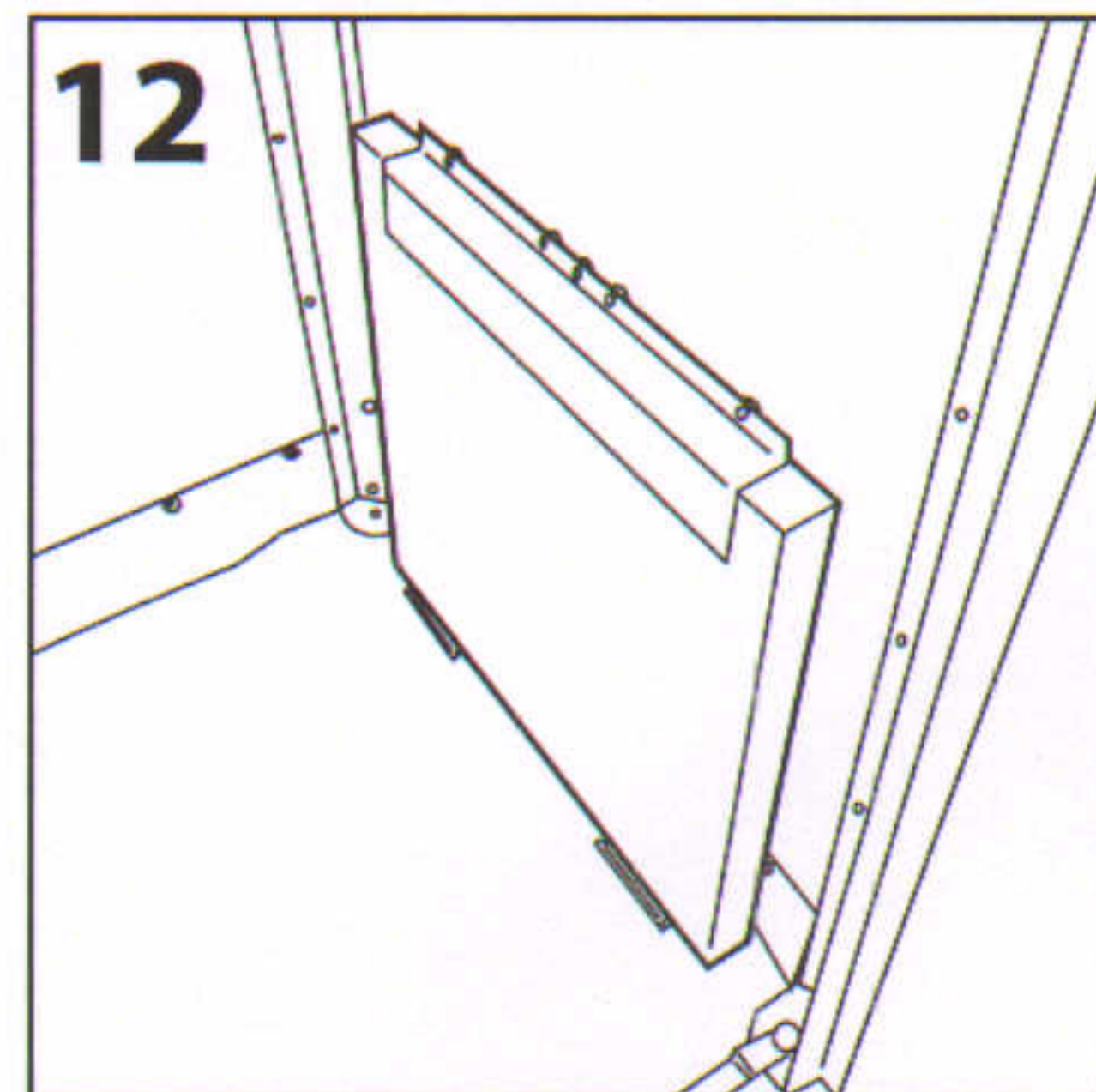
Using the correct size concrete slab (H or I, see table on page 1), lift the slab onto the bottom brackets so that it is positioned centrally (may require 2 people).




Place a top bracket (J) over the top of the paving slab and position centrally to the slab.



Using 5 off screws (G) and spacers (K), place the spacers in between the bracket and the panel and fix through the pre-drilled holes into the board.



Repeat Figs 7 - 11 using the remaining two paving slabs so that both sides of the housing and the rear have a fixed ballast weight.

 **Glasdon** AND MODUS™ ARE TRADEMARKS OF GLASDON GROUP AND ITS SUBSIDIARIES IN THE U.K. AND OTHER COUNTRIES.

Replacement components are available direct from GLASDON.
Glasdon U.K. Ltd reserves the right to alter specifications without prior notice.
GLASDON cannot be held responsible for claims arising from incorrect installation, unauthorised modifications or misuse of the product.

Issue 1 October 2011 C000/0411
© Copyright 2011

 **Glasdon**

Preston New Road
BLACKPOOL
Lancashire FY4 4UL
Tel: 01253 600410
Fax: 01253 792558
E-mail: sales@glasdon-uk.co.uk
Web: www.glasdon.com